

Hertfordshire Local Government Reorganisation:

Public Stakeholder Engagement
September 2025



Agenda

1. Local Government Reorganisation: Context
2. Our Vision
3. Where We Are, and Path Forward
4. Options Being Considered
5. Questions and Feedback



BOROUGH OF
BROXBORNE
www.broxbourne.gov.uk



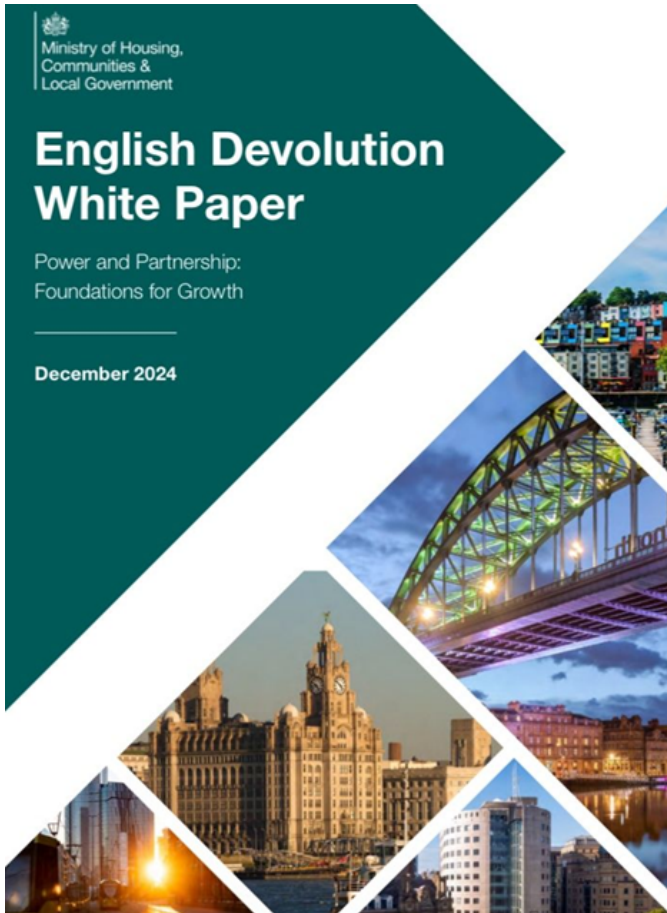
Local Government Reorganisation: Context



BOROUGH OF
BROXBORNE
www.broxbourne.gov.uk



What is Local Government Reorganisation?



- In late 2024, the Government set out plans to change how local councils operate. This means areas like Hertfordshire that operate a system with a County Council, and District & Borough Councils are being asked to **reorganise**.
- That's why the 11 council leaders in Hertfordshire are **working together** on a joint plan for how local government could be reshaped to better serve our communities.
- This plan will be sent to the Government in November 2025.



What does this mean?

- One of the most significant changes to local government in past 50 years.
- Furthers the Government's ambition to decentralise power and drive local growth.
- Key provisions include:
 - Creation of **new Strategic Authorities**
 - **Greater local control** over major areas including transport, skills, housing, environment, public safety and health
 - **Reorganisation of local government**
- Primary legislation anticipated in 2026.



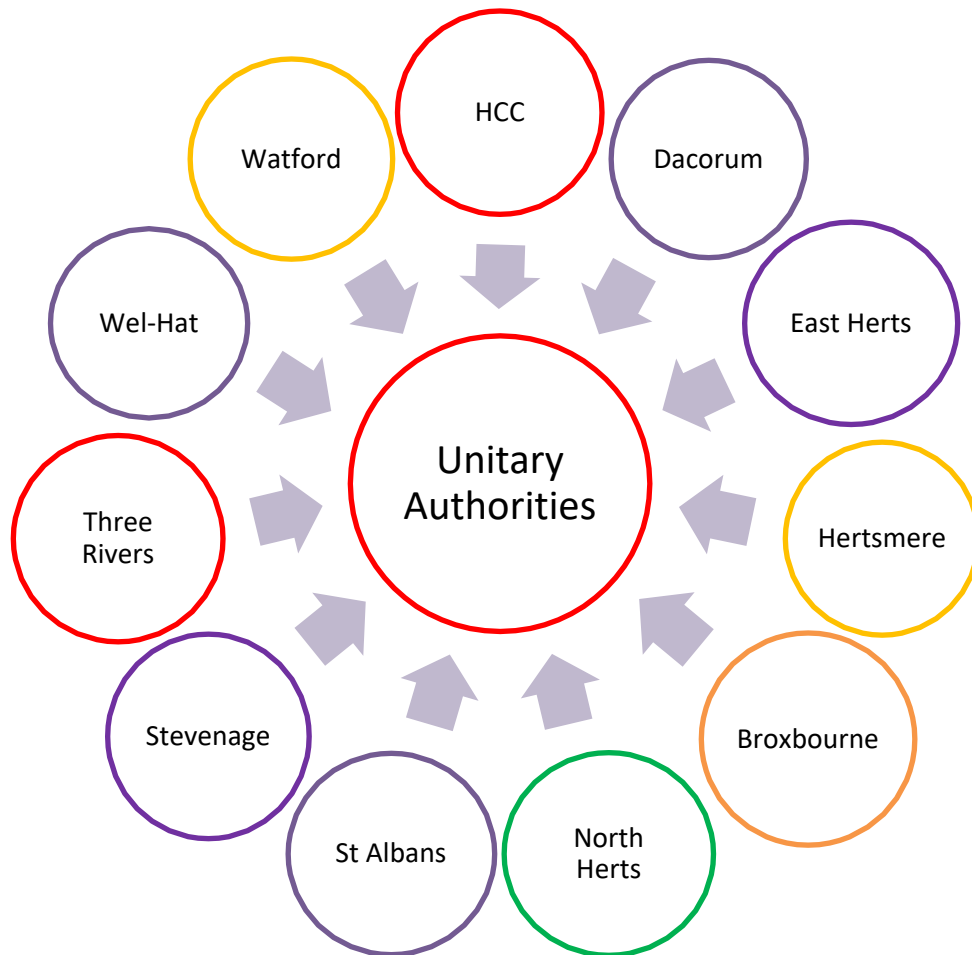
Our Vision



BOROUGH OF
BROXBORNE
www.broxbourne.gov.uk



What is the vision for Hertfordshire?



- **Vision:** replace two-tier systems (county and district councils) with Unitary Authorities; single councils responsible for all local services
- **Objectives:**
 - Enhance local accountability
 - Deliver better outcomes for residents
 - Generate efficiency savings that can be reinvested in public services
- All Hertfordshire authorities, plus the PCC, are working together to devise the best future arrangement for the county.



Our ambition

- **People-centred services** designed around residents' lives, not organisational boundaries
- **Integrated and efficient services** which reduce duplication and improve accountability, with services which are digitally enabled, prevention-focused and financially sustainable
- **Place-based growth** unlocking economic potential by leveraging its strategic location and sector strengths e.g. life sciences, creative industries.
- **Community empowerment** will be central, with residents actively shaping services.



BOROUGH OF
BROXBORNE



EAST
HERTS
COUNCIL



NORTH
HERTS
COUNCIL



Police & Crime
Commissioner
FOR HERTFORDSHIRE



STEVENAGE
BOROUGH COUNCIL



WATFORD
BOROUGH COUNCIL

THREE RIVERS
DISTRICT COUNCIL

WELWYN
HATFIELD

How Local Government works in Herts currently



Waste collection & recycling



Street cleaning



Parks & greenspaces



Environmental health



Licensing



Council Tax & Business rates



Planning



Parking



North Herts Museum & Hitchin Town Hall



Housing advice & homelessness support



Community safety & environmental crime



Community grants



Benefits including housing & council tax reduction

www.north-herts.gov.uk 01462 474000



Highways and transport (including public transport, street lights, traffic lights, potholes, gritting, road repairs & verge maintenance)



Adult social services, including blue badge applications, adult social care, day services and support for unpaid carers



Fire & rescue



Libraries & archives



Children's social care, including fostering and adoption



Registration Services



Schools and education, including SEND, schools admissions & free school meals and transport



Recycling, Re-use Centres & waste management



Trading standards



Public Health

www.hertfordshire.gov.uk 0300 1234040



New arrangements in summary



STRATEGIC AUTHORITY

Sets the strategy for the area e.g., the whole of Hertfordshire or possibly further afield

Led by an elected Mayor



UNITARY AUTHORITY

Delivers local services

Covers a wide range of responsibilities previously held by county and district councils

We do not know yet how many unitary councils Hertfordshire will have



TOWN AND PARISH COUNCILS

Will continue where they currently exist

Other arrangements being considered for areas without Town and Parish councils



Where We Are, and Path Forward



BOROUGH OF
BROXBORNE
www.broxbourne.gov.uk



What's happened so far?

- Hertfordshire's Interim Plan submitted on 20th March
- Councils and the Police and Crime Commissioner worked together to explore options including:
 - A **single county-wide unitary** authority (we no longer believe this is the right approach to represent residents)
 - A **two-unitary authority model**, aligned with existing economic/health partnerships
 - Potential **three- and four-unitary** models for further analysis



BOROUGH OF
BROXBORNE



EAST
HERTS
COUNCIL



NORTH
HERTS
COUNCIL



Police & Crime
Commissioner
FOR HERTFORDSHIRE



STEVENAGE
BOROUGH COUNCIL



WATFORD
BOROUGH
COUNCIL



HERTFORDSHIRE

THREE RIVERS
DISTRICT COUNCIL

WELWYN
HATFIELD

What is the Government's Criteria for unitary council proposals?

- a. Seek to establish **a single tier of local government**.
- b. Proposed unitary councils must be the **right size to achieve efficiencies**, improve capacity and withstand financial shocks. A population of 500,000 or more provides a guiding principle (rather than a target) and there is flexibility where this figure does not make sense for local areas.
- c. Unitary structures must **prioritise the delivery of high quality and sustainable public services** to citizens.
- d. Proposals should **show how councils in the area have sought to work together** in coming to a view and considered issues of local identity and cultural and historic importance.
- e. New unitary structures **should enable stronger community engagement** and deliver genuine opportunity for neighbourhood empowerment.



BOROUGH OF
BROXBORNE



EAST
HERTS
COUNCIL



NORTH
HERTS
COUNCIL



POLICE & CRIME
COMMISSIONER
FOR HERTFORDSHIRE



STEVENAGE
BOROUGH COUNCIL



WATFORD
BOROUGH COUNCIL



ST ALBANS
CITY & DISTRICT COUNCIL

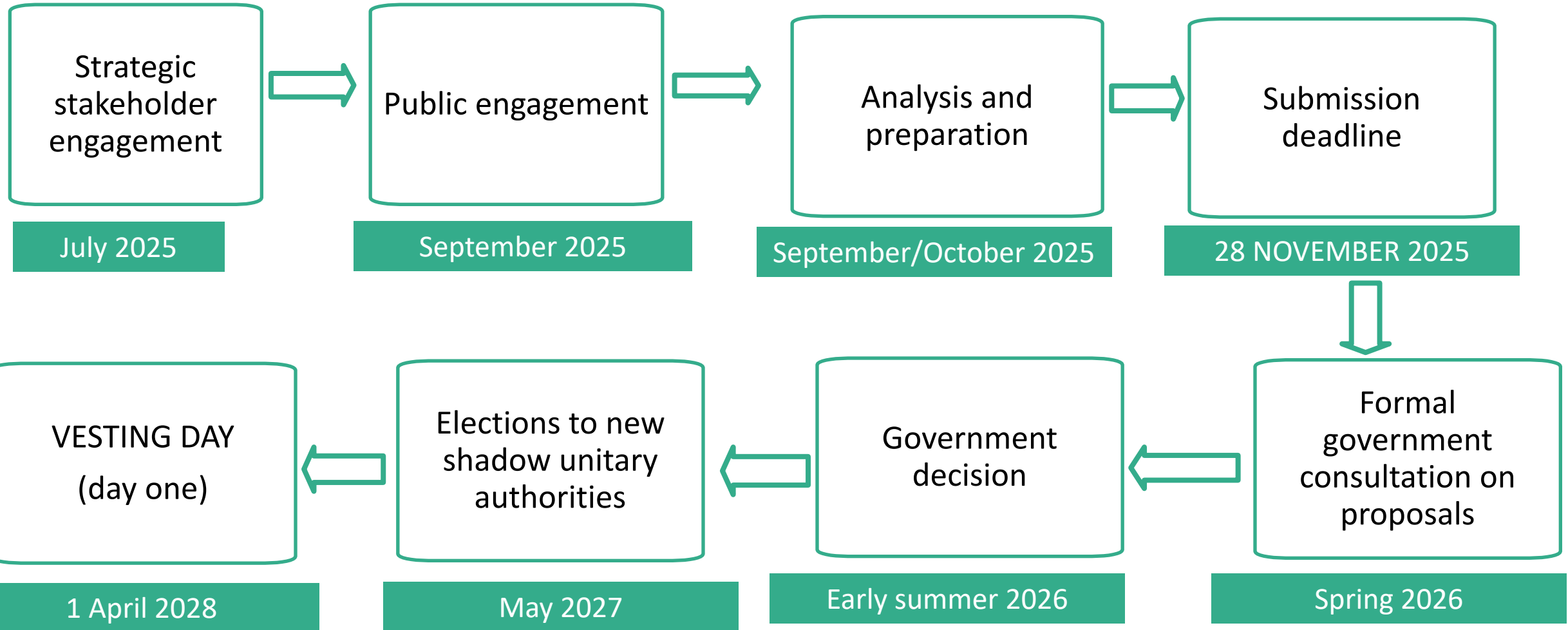


THREE RIVERS
DISTRICT COUNCIL



WELWYN
HATFIELD

When will LGR happen in Hertfordshire?



Who is leading this approach?

This is a **joint cross-country effort** led by:

- All district and borough Councils in Hertfordshire
- Hertfordshire County Council
- Police and Crime Commissioner

These bodies are aligning their plans to both the Government's criteria and the needs of local communities. Discussions with neighbouring areas are also underway for cross-border alignment.

They are working together to determine the best models for future local government to:

- **Deliver high-quality public services**
- **Meet local needs**
- **Achieve efficiencies and ensure capacity**
- **Support devolution arrangements**

Multiple workstreams, including service design, finance, and community empowerment, have also been set up.



Options Being Considered



BOROUGH OF
BROXBORNE
www.broxbourne.gov.uk



What options are being considered?

- When our final proposals are presented to the Government, each of the 11 Councils in Hertfordshire will indicate which of the 3 options they prefer.
- After considering a wide range of options for different numbers of new councils, we have selected three options for further detailed analysis and development, and are seeking the views of residents and stakeholders on these options:
 - **2 unitaries**
 - **3 unitaries**
 - **4 unitaries**



BOROUGH OF
BROXBOURNE
www.broxbourne.gov.uk



What options are being considered?

Local authority	Population (mid-2024)	Population (2045)
WEST	614,463	722,000
EAST	600,924	758,000

2 unitaries



West

Dacorum, Hertsmere, St Albans, Three Rivers, Watford

East

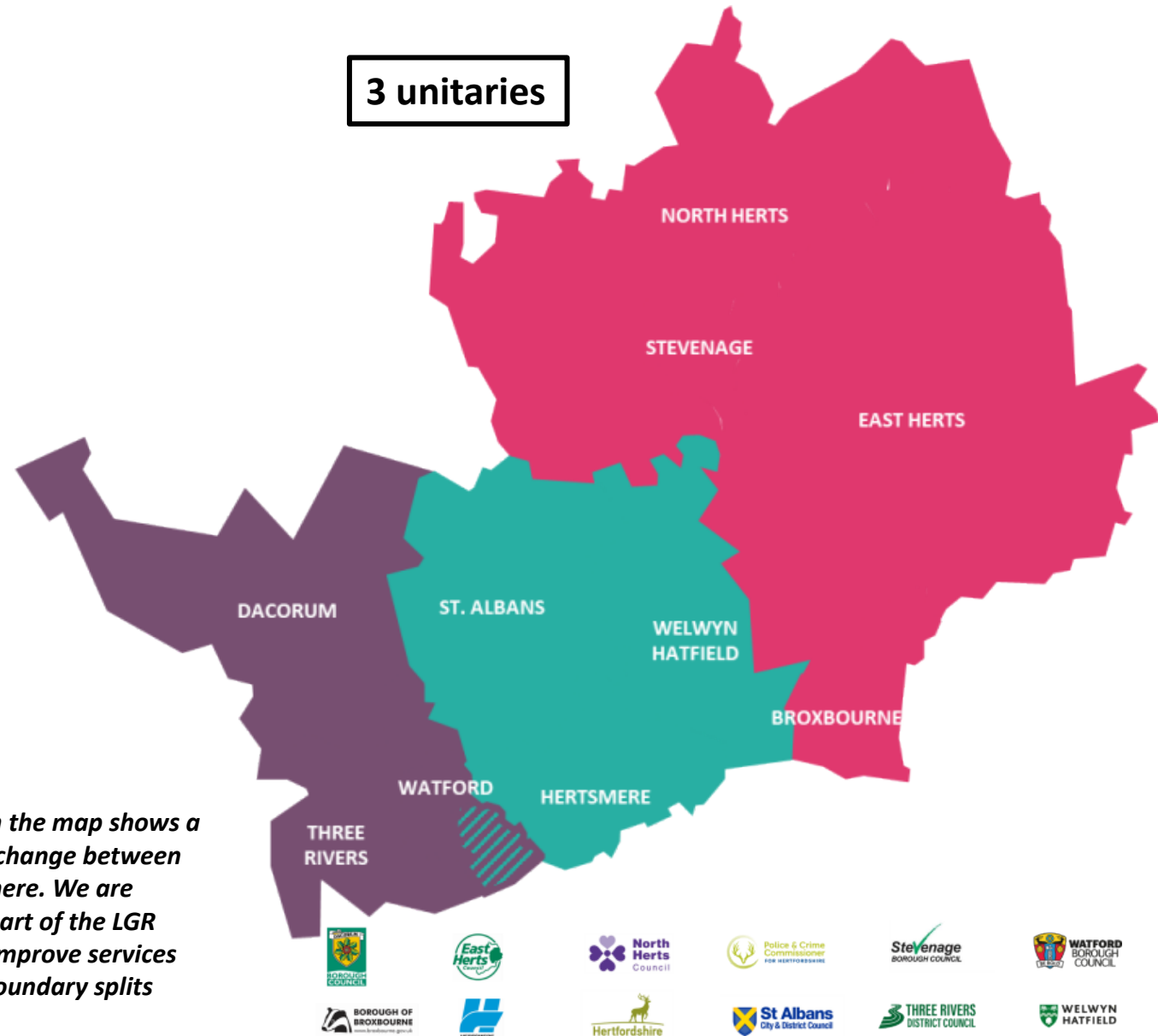
Broxbourne, East Herts, North Herts, Stevenage, Welwyn Hatfield

What options are being considered?

Local authority	Population (mid-2024)	Population (2045)
WEST	386,013	463,000
CENTRAL	350,199	414,000
EAST	479,175	603,000

West
Dacorum, Three Rivers, Watford PLUS Bushey North & Bushey South County Electoral Divisions
Central
Hertsmere, St Albans, Welwyn Hatfield MINUS Bushey North & Bushey South County Electoral Divisions
East
Broxbourne, East Herts, North Herts, Stevenage

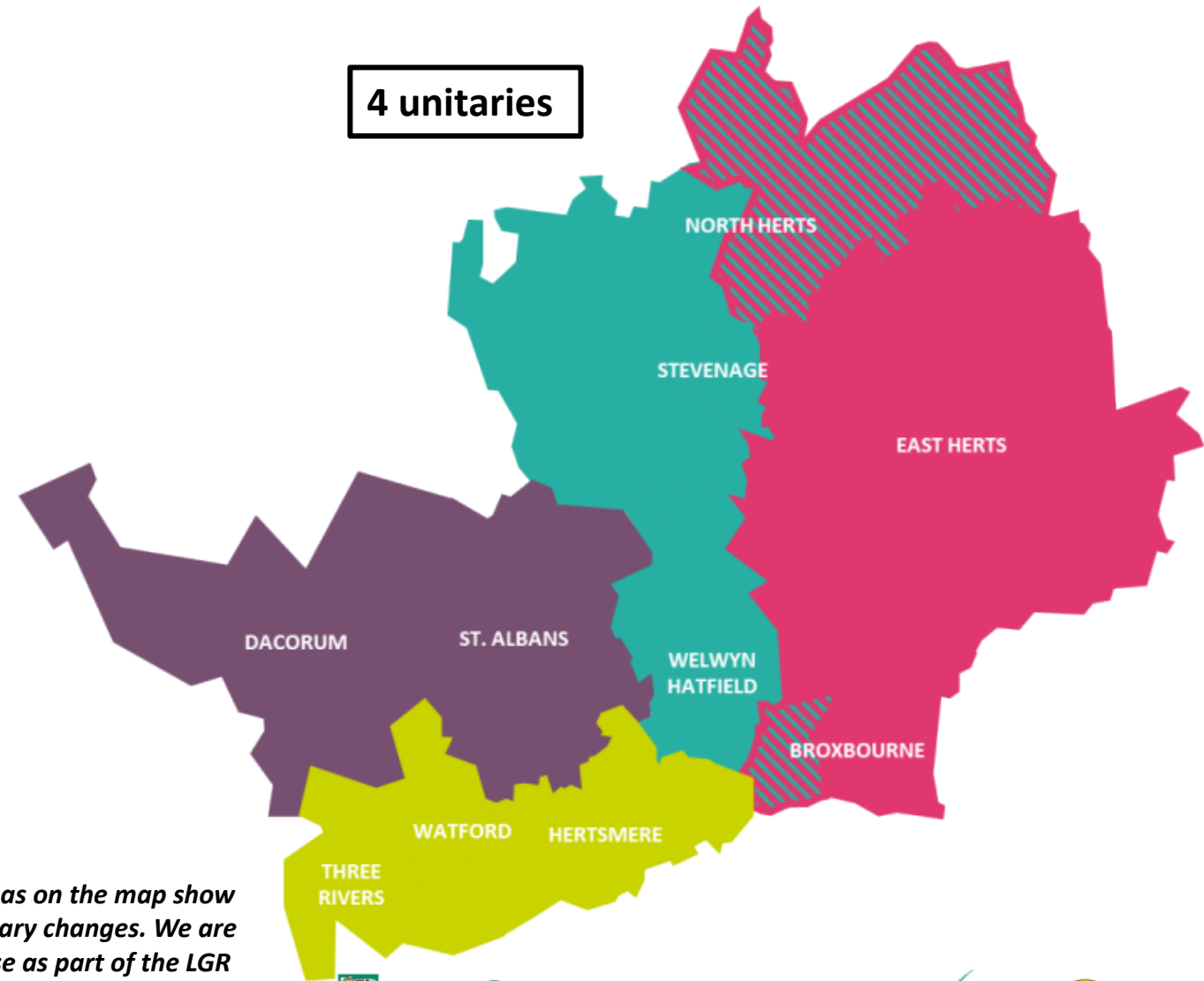
**The striped area on the map shows a potential boundary change between Watford and Hertsmere. We are considering this as part of the LGR process, as it could improve services where the current boundary splits communities.*



What options are being considered?

Local authority	Population (mid-2024)	Population (2045)
WEST	306,582	351,000
SOUTH-WEST	307,881	371,000
CENTRAL	316,013	391,000
EAST	284,893	366,000

West
Dacorum, St Albans
South West
Hertsmere, Three Rivers, Watford
Central
North Herts, Stevenage, Welwyn Hatfield MINUS Royston Heath, Royston Palace, Royston Meridian, Ermine, Weston & Sandon, Arbury wards from North Herts District Council AND Northaw & Cuffley Ward from Welwyn Hatfield District Council.
East
Broxbourne, East Herts PLUS Royston Heath, Royston Palace, Royston Meridian, Ermine, Weston & Sandon, Arbury wards from North Herts District Council AND Northaw & Cuffley Ward from Welwyn Hatfield District Council.



**The striped areas on the map show potential boundary changes. We are considering these as part of the LGR process, as they could better reflect existing communities and economies.*



Questions and Feedback



BOROUGH OF BROXBORNE
www.broxbourne.gov.uk



Hertfordshire
BROXBORNE
www.broxbourne.gov.uk



St Albans
City & District Council



THREE RIVERS
DISTRICT COUNCIL
Hertfordshire



WELWYN
HATFIELD
City & District Council



THREE RIVERS
DISTRICT COUNCIL



WELWYN
HATFIELD

Providing Feedback

- We are united in wanting to hear from as many people, businesses and organisations in our local communities as possible.
- Please visit Hertfordshire's dedicated LGR website for full information: www.hertfordshire-lgr.co.uk
- Once you have explored the website, complete the engagement survey
- You can also share your views directly with us at **hertfordshirelgr@connectpa.co.uk**



Thank You



BOROUGH OF
BROXBORNE
www.broxbourne.gov.uk



St Albans
City & District Council



THREE RIVERS
DISTRICT COUNCIL



WELWYN
HATFIELD